



KUMKANG PLANT INDUSTRY CO.,LTD



KUMKANG PLANT.,LTD

112-7, Dokjeong, Jangan, Hwasung-city, Gyeonggi-do, Korea

TEL +82-31-351-8400

E-mail ggplant@hanmail.net

FAX +82-31-351-7373

URL www.kkplant.net

Index

↗ The Company	3
↗ Concrete Batching Plant	
- Concrete Batching Plant	5
- Portable Concrete Batching Plant (K2-60)	6
↗ Asphalt Mixing Plant	
- Asphalt Mixing Plant (Stationary type)	7
- Asphalt Recycle Plant	8
↗ Crusher	
- Stationary Crusher	9
- Portable Crusher	10
↗ Plant View in Site	11
↗ Sales Report since 2001	14

KUMKANG PLANT.,LTD

112-7, Dokjeong, Jangan, Hwasung-city, Gyeonggi-do, Korea

TEL +82-31-351-8400

FAX +82-31-351-7373

E-mail ggplant@hanmail.net

URL www.kkplant.net

The Company

Greetings

We, Kumkang Plant Co.,LTD, have been doing our best in order to satisfy with customer's demands based on the technology and know-how that we experienced at domestic and overseas construction site for 20 years. we will always make together it with our customers in everywhere and everytime.

By intention of future-oriented, we can make a promise a vision to our customers. Hoping you have a great interests an our products and services.

History

1986. 07.	Established Dong-sung Construction machinery
1989. 06.	Changed the company name into Korea Machinery Co.,Ltd and company expansion.
1990. 08.	Established KumKang Environment Construction.
1997. 01.	Established KumKang Plant Co., Ltd (combine Korea Machinery Co.Ltd and KumKang Environment Construction.)
1998. 12.	Factory1 : Factory expansion to Sihwa Industrial Complex Factory2 : Sasa-Dong, Ansan-Si, Gyunggi-Do,Korea.
2001. 09. ~ 2009. 03.	Main Office & Factory a new building tranfer (112-7, Dokjeong, Jangan, Hwasung-City, Gyunggi-Do, Korea)

KUMKANG PLANT.,LTD

112-7, Dokjeong, Jangan, Hwasung-city, Gyeonggi-do, Korea

TEL +82-31-351-8400 E-mail ggplant@hanmail.net
FAX +82-31-351-7373 URL www.kkplant.net

The Company

Technology

1. Mechanical Technology, Can-manufacturing Technology, Automatic Control Technology
2. Various Industrial, Construction Plant, Design & Manufacturing
3. Electricity & Electronic Automatic Control design and Construction
4. dismantling & installing of Construction Site, Factory Plant
5. dismantling , repairs & installing of remicon, ascon
6. Construction experiences of overseas and related business process

Overall' Rental Equipments

1. Used equipment sales.
2. Overhaul equipment
3. import and export
4. rental equipment

ISO 9001 Certification

Offer-design-manufacturing-quality control-cargo out-site erection-hand over-operation & maintenance

Products

- Concrete batch plant
- Portable concrete batch plant
- Asphalt mixing plant
- Recycling asphalt plant
- Crushing plant

*500 sites in domestic market
Over 20 countries & 50 construction sites*

Certification



KUMKANG PLANT.,LTD

112-7, Dokjeong, Jangan, Hwasung-city, Gyeonggi-do, Korea

TEL +82-31-351-8400

E-mail ggplant@hanmail.net

FAX +82-31-351-7373

URL www.kkplant.net

Concrete Batching Plant

Concrete Batching Plant

KumKang Batching Plant is ...

Proud of the highest quality not only productivity but management of concrete and asphalt batch plant. We are specialized from design to manufacturing and erection at site. our engineering team can support and provide you with the most appropriate models based on our quality control system as we have the highest knowledge and experience in this scope of work.



Specifications of KUMKANG Concrete Batch Plant

Model		KBP-30	KBP-60	KBP-90	KBP-120	KBP-150	KBP-210
Description							
Plant Capacity		30m ³ /h	60m ³ /h	90m ³ /h	120m ³ /h	150m ³ /h	210m ³ /h
Mixer	Model	KM 500	KM 1000	KM 1500	KM 2000	KM 2500	KM 3500
	Mixer Capacity(m ³)	0.5	1.0	1.5	2.0	2.5	3.5
	Mixer Motor(Kw × Unit)	22×1	45×1	22×2	30×2	37×2	55×2
Belt Conveyor	Motor(Kw/HP)	3.75/5	5.5/7	15/22	22/30	30/37	30/37
	Width(mm)	500	600	700	900	1,050	1,050
	Std Length(M)	8	12	28/21.7	28/21.8	28/22.5	28/23.3
	Capacity(T/H)	500	600	600	800	1,000	1,000
Weigher Capacity(Kg)	Gravel(1,2)	1,000	2,000	2,500	3,000	3,500	4,500
	Sand	1,000	2,000	2,500	2,500	3,500	4,500
	Cement	400	600	800	1,000	1,200	1,500
	Water	200	300	400	500	600	750
	Admixture	20	20	20	20	20	50
Concrete Hopper Capacity(m ³)		-	-	2.5	3	4	5.5
Cement Bin Capacity(m ³)		-	-	2.1	2.5	2.5	3.2
Water Tank Capacity(m ³)		2	3	3	4	5	5

KUMKANG PLANT.,LTD

112-7, Dokjeong, Jangan, Hwasung-city, Gyeonggi-do, Korea

TEL +82-31-351-8400

FAX +82-31-351-7373

E-mail ggplant@hanmail.net

URL www.kkplant.net

Concrete Batching Plant

Portable Concrete Batching Plant (K2-60)

KumKang Portable Batching Plant is ...

Superior mobility as designed a one body and reduce installation cost with easily installation in the narrow area. You would normally use concrete portable batch plant when you are planning a project that will not be a permanent site location for your concrete mixing and batching operation. Many consider it ideal because of fast installation. Please Contact me for more details about some of the applications the portable concrete batch plants are used



Specifications of KUMKANG Concrete Batch Plant

NO	Description	Size &Weight	Remark
1	Mixer Capacity	1.0M ³ /Batch (60M ³ /h)	
2	Mixer Motor	45Kw X 4P	
3	Motor(Reducer)	Geared & Chain Sprocket	30 : 1
4	Mixer Blade Tip	Hi Mn Steel	
5	Sand, Gravel Supply Hopper	40m ³	
6	Supply Hopper Vibrator	0.2Kw	
7	Sand Scale Hopper	0 - 3,000kg	
8	Gravel Scale Hopper	0 - 3,000kg	
9	Cement Scale Hopper	0 - 1,500kg	
10	Water Scale Hopper	0 - 1,500kg	
11	Plasticizer Scale Hopper	0 - 100kg	
12	Conveyor Belt	W600mm X 12M	Sand, Gravel 1ea
13	Cement Screw Conveyor	Ø250 X 9M	
14	Air Compressor	5.5Kw(7.5HP)	
15	Conveyor Belt Motor	7.5HP	
16	Auto Control Panel	Auto Control Air System	Ø3 380V X 50/60Hz
17	Steel Structure	Frame, Safety Ladder	

KUMKANG PLANT.,LTD

112-7, Dokjeong, Jangan, Hwasung-city, Gyeonggi-do, Korea

TEL +82-31-351-8400

FAX +82-31-351-7373

E-mail ggplant@hanmail.net

URL www.kkplant.net

Asphalt Mixing Plant

Asphalt Mixing Plant (Stationary type)

KumKang Asphalt mixing plant is ...

Asphalt mixing plant consists of batching system, drying system, hot aggregate elevating system, sieving system, storage system, weighing system, mixing system, conduction oil heating system, asphalt supplying system, powder supplying system, dust catching system and finished product silo, etc.

The modular design and clearly defined interfaces between all plant components allow the utilization of local manufacturing sources. The reduction of transportation and production cost is a direct benefit for our customers. The modular design and the preparation of the modules through the production leads to a fast and uncomplicated job-site assembly.



Specifications of KUMKANG Asphalt Mixing Plant

MODEL	KAB-1000	KAB-1300	KAB-1500	KAB-2000	KAB-2500	KAB-3000
Mixing Capacity	60-80 T/H	80-104 T/H	90-120 T/H	120-160 T/H	160-200 T/H	180-240 T/H
Dryer (m/m)	1600Øx7000l	1600Øx7700l	2150Øx6410l	2200Øx8400l	2540Øx8700l	2750Øx9000l
Dryer BUMER	560 l/h	600 l/h	1120 l/h	1120 l/h	1480 l/h	1680 l/h
Exhaust Fan	560 m ³ /min 380 mm aq	580 m ³ /min 380 mm aq	800 m ³ /min 450 mm aq	1100 m ³ /min 420 mm aq	1400 m ³ /min 420 mm aq	1400 m ³ /min 420 mm aq
Hot Elevator	90 T/H	104 T/H	140 T/H	170 T/H	220 T/H	250 T/H
Vibrating Screen	4 kinds	4 kinds	4 kinds	4 kinds	4 kinds	4 kinds
Hot Bin	6 m ³	6 m ³	15.9 m ³	16 m ³	28 m ³	30 m ³
Aggregate Scale	1000 kg	1300 kg	1500 kg	2000 kg	2500 kg	3000 kg
Asphalt Scale	150 kg	200 kg	300 kg	300 kg	400 kg	500 kg
Automatic Control System	C.R.T Computer Panel					
Mixer	1000 kg/B	1300 kg/B	1500 kg/B	2000 kg/B	2500 kg/B	3000 kg/B

KUMKANG PLANT.,LTD

112-7, Dokjeong, Jangan, Hwasung-city, Gyeonggi-do, Korea

TEL +82-31-351-8400

FAX +82-31-351-7373

E-mail ggplant@hanmail.net

URL www.kkplant.net

Asphalt Mixing Plant

Asphalt Recycle Plant

KumKang Asphalt recycle plant is...

As the wasted asphalt which is occurring with repair and maintenance of the road produce new hot mix with heating again and mix with new aggregate, becomes the help in prime cost curtailment and with advanced nation it is an equipment which it uses plentifully from the place which environmental regulation is strict.



Specifications Of KUMKANG Asphalt Recycle Plant

Descriptions	KRP30-CB	KRP45-CB	KRP60-CB
Capacity (3%)	30t/h	45t/h	60t/h
Dryer Dimension	Ø1600 x 800mm	Ø1950 x 800mm	Ø2300 x 800mm
Dryer Power	3.7kw x 4	5.5kw x 4	7.5kw x 4
Burner Heat Capacity	300 l/h(MAX)	450 l/h(MAX)	600 l/h(MAX)
Burner Blower Power	7.5kw	11kw	15kw
Circulation Blower	200m ³ /min x 200mmaq	300m ³ /min x 200mmaq	450m ³ /min x 200mmaq
Circulation Blower Power	15kw	18.5kw	30kw
Dust Collector	Cyclone		
Fan	300m ³ /min x 280mmaq	450m ³ /min x 300mmaq	450m ³ /min x 300mmaq
Fan Power	30kw	45kw	45kw

KUMKANG PLANT.,LTD

112-7, Dokjeong, Jangan, Hwasung-city, Gyeonggi-do, Korea
 TEL +82-31-351-8400 | E-mail ggplant@hanmail.net
 FAX +82-31-351-7373 | URL www.kkplant.net

Crusher

Stationary Crusher

Use

Gathering of aggregate, exploitation of stony mountain, clearing industrial waste

Features

- Universal use
- Minimized dust formation
- Low wear and tear
- Low noise emission
- Minimized fire hazard



Specifications of 200-250t/h

No	Description	100T/H			150T/H		
		Specification	Q'ty	Motor(Kw)	Specification	Q'ty	Motor(Kw)
1	Hopper	15M3	1	-	18M3	1	
2	G/Feeder	42"×14'	1	15	48"×16'	1	22
3	Jaw Crusher	30"×42'	1	110	36"×48'	1	150
4	Screen	5"×12'	1	7.5	-		
5	Cone Crusher	48" [S]	1	110	66" [S]	1	190
6	Screen	6"×20'	1	22	8"×20'	1	22
7	Cone Crusher	48" [FC]	1	150	48" [FC]	1	150
8	Belt Conveyor		8			8	

KUMKANG PLANT.,LTD

112-7, Dokjeong, Jangan, Hwasung-city, Gyeonggi-do, Korea

TEL +82-31-351-8400

FAX +82-31-351-7373

E-mail ggplant@hanmail.net

URL www.kkplant.net

Crusher

Portable Crusher

Use

Rock, tunnel, building dismantlement

Features

- Flexibility
- Lower freight cost
- Direct and efficient operation
- Easy to adapt and flexible to collocate
- Reliable performance and convenient maintenance



Specifications of 100-150t/h

No	Description	100T/H			150T/H		
		Specification	Q'ty	Motor(Kw)	Specification	Q'ty	Motor(Kw)
1	Hopper	12M3	1	-	15M3	1	
2	G/Feeder	36"×14'	1	11	42"×14'	1	15
3	Jaw Crusher	20"×36'	1	75	25"×40'	1	91
4	Screen	4"×14'	1	15	5"×16'	1	22
5	Cone Crusher	36"(S)	1	55	48"(S)	1	110
6	Belt Conveyor		7			7	

KUMKANG PLANT.,LTD

112-7, Dokjeong, Jangan, Hwasung-city, Gyeonggi-do, Korea

TEL +82-31-351-8400

FAX +82-31-351-7373

E-mail ggplant@hanmail.net

URL www.kkplant.net

Plant View in Site

210M3/HR TOWER B.PLANT-KOREA



120M3/HR B.PLANT-VIETNAM(JAPAN)



210M3/HR B.PLANT-VIETNAM(KOREA)



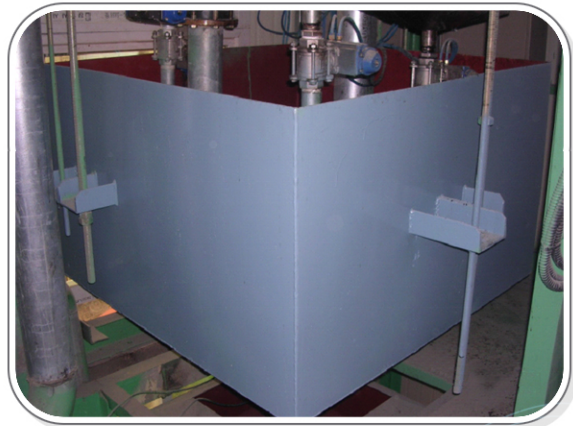
SILO BODY, Type-210M3/Hr



AGG.SCALE - 4500KG/BATCH



WATER SCALE-1000KG/BATCH



KUMKANG PLANT.,LTD

112-7, Dokjeong, Jangan, Hwasung-city, Gyeonggi-do, Korea
TEL +82-31-351-8400 | E-mail ggplant@hanmail.net
FAX +82-31-351-7373 | URL www.kkplant.net

Plant View in Site

MAIN POWER ROOM-(SUBSTATION 650KW)



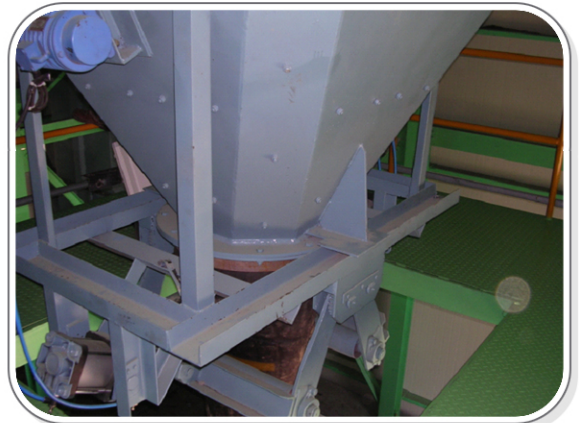
BP-210M3/HR CONTROL PANEL



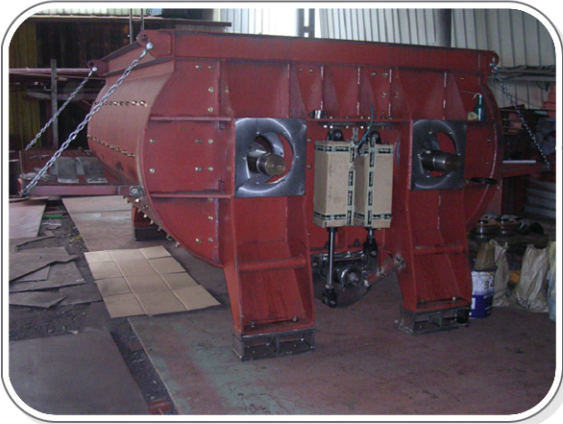
PRE MEETING



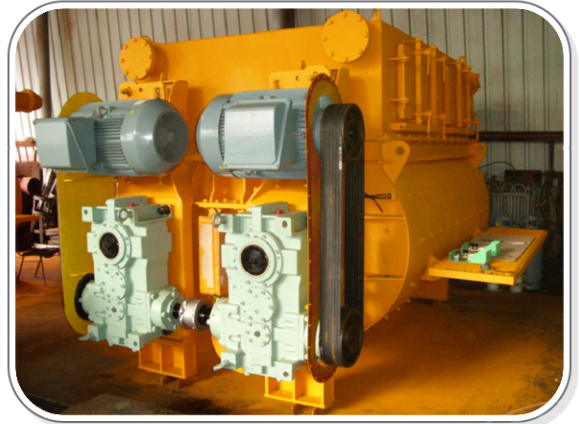
CONCRETE HOPPER & GATE



3.5M3/BATCH-TWIN MIXER ASSEMBLY



TWIN SHAFT MIXER 3.5M3/BATCH



KUMKANG PLANT.,LTD

112-7, Dokjeong, Jangan, Hwasung-city, Gyeonggi-do, Korea
TEL +82-31-351-8400 | E-mail ggplant@hanmail.net
FAX +82-31-351-7373 | URL www.kkplant.net

Plant View in Site

500TON Silo INSTALLATION



BP & SILO SITE ERECTION



SILO CELL WELDING WORK



SILO CONE WELDING



CHILLER INSTALLATION



C3 SILO BODY & ROTARY FEEDER



KUMKANG PLANT.,LTD

112-7, Dokjeong, Jangan, Hwasung-city, Gyeonggi-do, Korea
TEL +82-31-351-8400 | E-mail ggplant@hanmail.net
FAX +82-31-351-7373 | URL www.kkplant.net

Sales Report since 2001

	CLIENT	SITE	Q'ty	EQUIPMENT	DATE	CAPACITY (Ton/Hr)	REMARKS
2001	NAMSUNG CONSTRUCTION Co.LTD	EAST GWANGYANG ROAD TUNNEL(KOREA)	3	BP	01.03.	120	
	DAIDO ENG	Cheonan(KOREA)	2	BP	01.04	60	
	HYUNDAI CONSTRUCTION	AMATURAPURA HOUSING DEP.(INDONESIA)	2	BP	01.04	60	K2-60
	SUNSAN CIVIL ENG.	SUBWAY 7-21 SECTION (KOREA)	2	BP	01.06	45	
	JINYANG CIVIL ENG.	YEOJU-MUNMAK ROAD (KOREA)	2	BP	01.07	120	
	DAEWOO CONSTRUCTION	GUEMHODONG APARTMENT(KOREA)	2	BP	01.11	150	
	BUCKSAN CONSTRUCTION	SUBWAY 7-21 SECTION (KOREA)	2	BP	01.11	90	
	2002	DAEMYUNG CONSTRUCTION	MOKPO SHORE PROTECTION WORKS(KOREA)	2	BP	02.04	150
SK CONSTRUCTION		ANSAN NEW CITY(KOREA)	2	BP	02.04	90	
YEONJUNG CIVIL ENG.		DAERIM-DONG SUBWAY (KOREA)	3	BP	02.07	60	
KUMHO CONSTRUCTION		HONGEUN-DONG SUBWAY(KOREA)	7	BP	02.08	45	
SHINHAN CONSTRUCTION		GYUNGGI-DO GWANGJU(KOREA)	2	BP	02.10	60	
SSANGYOUNG CONSTRUCTION		HYATT HOTEL(DUBAI)	2	BP	02.11	60	K2-60
2003		NAMUNG CONSTRUCTION	SUWON LG APARTMENT (KOREA)	4	BP	03.01	45
	WOOWON DEP.	DAEGU DASAN SUBWAY (KOREA)	2	BP	03.02	120	
	SEHYUN SHIPPING	VIETNAM EXPORT	5	BP	03.04	60	K2-60
	DONG-A CONSTRUCTION	ANSAN NEW CITY SECOND CONSTRUCTION(KOREA)	2	BP	03.05	120	
	SAMBO E&C	KEPCO ELECTRIC POWER (KOREA)	1	BP	03.06	90	
	DAEYANG CIVIL ENG.	SK CONSTRUCTION POWER PLANT(KOREA)	5	BP	03.08	60	

KUMKANG PLANT.,LTD

112-7, Dokjeong, Jangan, Hwasung-city, Gyeonggi-do, Korea

TEL +82-31-351-8400

FAX +82-31-351-7373

E-mail ggplant@hanmail.net

URL www.kkplant.net

Sales Report since 2001

	CLIENT	SITE	Q'ty	EQUIPMENT	DATE	CAPACITY (Ton/Hr)	REMARKS
2004	GYUNGWOO CIVIL ENG.	WANDO TUNNEL(KOREA)	4	BP	04.01	90	
	HYODONG DEP	ARIZONA ROAD(U.S.A)	3	BP	04.03	60	K2-60
	SAMPYO INDUSTRIAL	YEOJU FACTORY(KOREA)	2	BP	04.07	180	
	HYUNDAI CONSTRUCTION	JUNGANG HIGHWAY(KOREA)	3	BP	04.08	45	
	LIM KWANG E&C	JUNGANG HIGHWAY(KOREA)	2	BP	04.10	150	
	J.S.B	PHILIPINE EXPORT	2	BP	04.11	60	K2-60
2005	SINSUNG INDUSTRIAL	HONGCHEON FACTORY (KOREA)	2	BP	05.01	150	
	YULSAN DEP.	VIETNAM EXPORT	3	BP	05.03	60	K2-60
	LENEX INDUSTRIAL	VIETNAM EXPORT	1	BP	05.05	60	
	KOREAN MILITARY	AFGHANISTAN EXPORT	2	BP	05.05	120	
	TAIKWANG MACHINE	CHEONGSONG POWER PLANT(KOREA)	1	BP	05.08	180	
	SPEED CEMENT	WONJU FACTORY	2	BP	05.10	210	
	HYODONG DEP.	YEOJU BASE OF STORE (KOREA)	1	BP BP	05.11	45	
	DAEWOO CONSTRUCTION	SEOUL SUBWAY 7 LINE (KOREA)	2	BP	05.12	150	
2006	SEWON DEP.	DAEGU SUBWAY(KOREA)	2	BP	06.01	210	
	SAMGYUNG CIVIL.	JUKDO (KOREA)	2	BP	06.02	180	
	SAMPYO INDUSTRIAL	YEOJU FACTORY(KOREA)		BP	06.02	60	
	KOREA CEMENT	WONJU BRIC FACTORY (KOREA)	3	BP	06.03	45	
	HANYOUNG CONSTRUCTION	YOUNGDONG CREMATORY (KOREA)	2	BP	06.04	150	
	SUNGPOONG CONSTRUCTION	NEW SOUTH WALES ROAD (AUSTRALIA)	3	BP	06.06	60	K2-60
	HANDONG DEP.	SONGCHU CIRCULATION	2	BP	06.08	150	
		EXPRESS WAY(KOREA)	2	BP	06.08	90	
	TAIKWANG MACHINE	PAJU FACTORY(KOREA)			06.08	90	
	KINGIL	BUYEO NATIONAL ROAD (KOREA)	2	BP	06.09	210	
	BOSUNG INDUSTRIAL	MISIRYUNG TUNNEL(KOREA)	2	BP	06.11	90	
	HYODONG DEP.	YOUNGWOL TUNNEL(KOREA)	1	BP	06.12	60	

KUMKANG PLANT.,LTD

112-7, Dokjeong, Jangan, Hwasung-city, Gyeonggi-do, Korea

TEL +82-31-351-8400

FAX +82-31-351-7373

E-mail ggplant@hanmail.net

URL www.kkplant.net

Sales Report since 2001

	CLIENT	SITE	Q'ty	EQUIPMENT	DATE	CAPACITY (Ton/Hr)	REMARKS
2007	YOUNGNAM CONCRETE	YOUNGCHEON HIGHWAY (KOREA)	2	BP	07.02	90	
	ROAD MAP CORP.	GWANGYANG POWER PLANT (KOREA)	2	BP	07.05	150	
	SAMWOO DEP.	HAIDO(KOREA)	3	BP	07.06	60	
	JUNGJIN CORPORATION	INDONESIA EXPORT	3	BP	07.08	60	K2-60
	YOUNGJIN CORPORTATION	MONGLIA EXPORT	3	BP	07.08	60	K2-60
	HYOMIN CONSTRUCTION	SAKHALIN EXPORT	5	BP	07.09	60	K2-60
	HYOMIN CONSTRUCTION	SAKHALIN EXPORT	2	BP	07.10	60	K2-60
	DAESHIN INDUSTRIAL	PHILIPINE EXPORT	3	BP	07.11	60	K2-60
	DAESHIN INDUSTRIAL	KAZAKHSTAN EXPORT	3	BP	07.12	60	K2-60
2008	ROCK-MON	MONGOLIA	2	BP	08.01	60	K2-60
	HYUNDAI CONSTRUCTION	CUBA EXPORT	2	BP	08.02	60	K2-60
	SAMSUNG CONSTRUCTION	INCHEON GRAND BRIDGE (KOREA)	3	BP	08.04	90	
	HANJUNG CORP.	JECHEON TUNNEL	2	BP	08.06	120	
	HYUNDAI CONSTRUCTION	YEOJU FACTORY	1	BP	08.08	120	
	HYUNDAI CONSTRUCTION	CUBA EXPORT	2	BP	08.09	60	K2-60
	JEONHO TRADE	MONGOLIA EXPORT	3	BP	08.11	60	K2-60
2009	RABASA	MONGOLIA EXPORT	2	BP	09.01	60	K2-60
	HANIL CONSTRUCTION	BANGLADESH EXPORT	3	BP	09.02	60	K2-60



KUMKANG PLANT.,LTD

112-7, Dokjeong, Jangan, Hwasung-city, Gyeonggi-do, Korea

TEL +82-31-351-8400

FAX +82-31-351-7373

E-mail ggplant@hanmail.net

URL www.kkplant.net